

Weft Triaxial Knitmat®

Weft Triaxial Knitmat®

FGI's **Weft Triaxial Knitmat®** is a high strength stitch bonded **Triaxial** product. Stitch Bonding mechanically combines 90° (Weft) reinforcements and ± 45° reinforcements. **Weft Triaxial Knitmat®** products are available with and without chopped glass strand. Combinations with glass, polyester, and other veils, along with CSM are available upon request. The resulting product is extremely conformable, offering fast wet out, and excellent processability with high dry and wet strength. **Weft Triaxial Knitmat®** materials are ideal for hand lay up molding, resin infusion, SRIM, RRIM, and SCRIMP® processes. FGI's proprietary sizing allows the end user complete compatibility, with Polyester, Vinyl Ester, Epoxy, and Polyurethane resin systems.

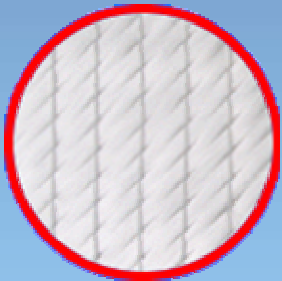
Product Data

	SXTF4303
Nominal Weight oz./sq. yd.	45.79
Weft (90°) Weight oz./sq. yd.	17.60
±45° Weight oz./sq. yd.	24.74
Mat/Veil Weight oz./sq. yd.	3.0
Nominal Thickness	.070 in.
Roll Length Yards	55
Roll Length Meters	50.3
Weight per inch of Width	4.4 lbs.

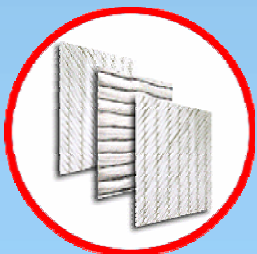
* Optional styles available upon request — Special pricing may be applicable.

Packaging Data

All rolls individually boxed and palletized according to size and weight.



SXTF4303



+45° / 90° / -45°